

**LEGACY EDITION *SBX***



***CATALINA***

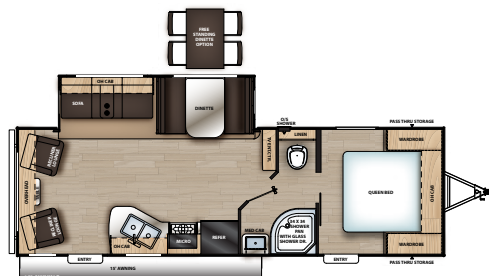


## LEGACY EDITION

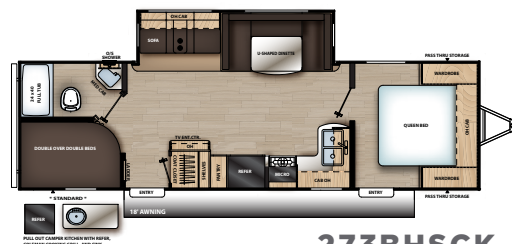
The Catalina Legacy Edition line-up offers a variety of floor plans to suit your needs. Each floor plan we build here at Catalina is carefully thought out with you, the customer, in mind. We pride ourselves on the details with the perfect balance of features and functionality!



**243RBS**



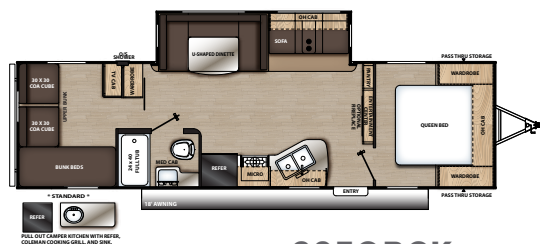
**263RLS**



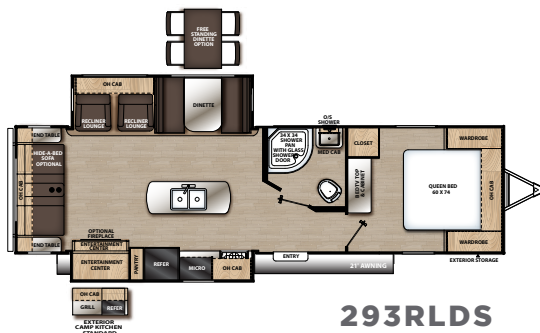
**273BHSC**



**283RKS**



**293QBCK**



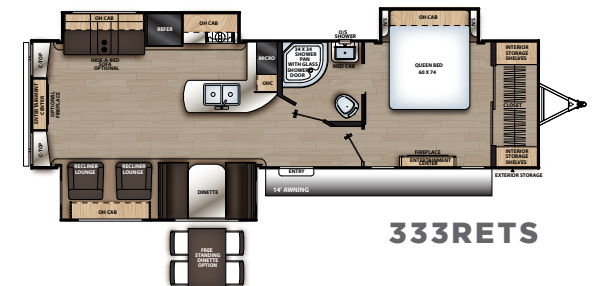
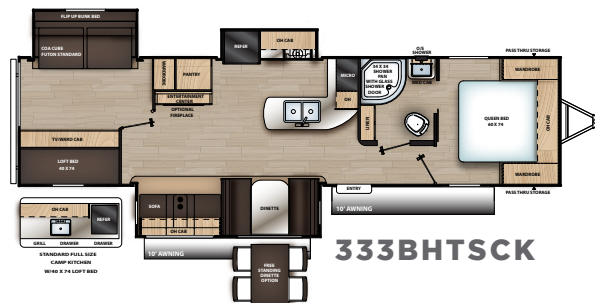
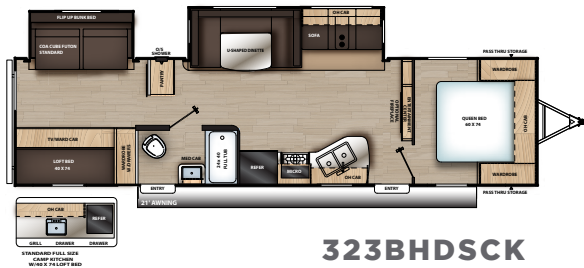
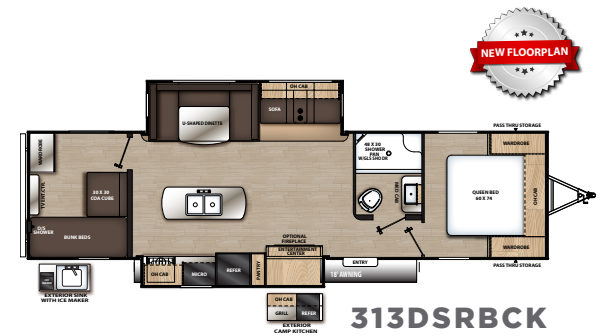
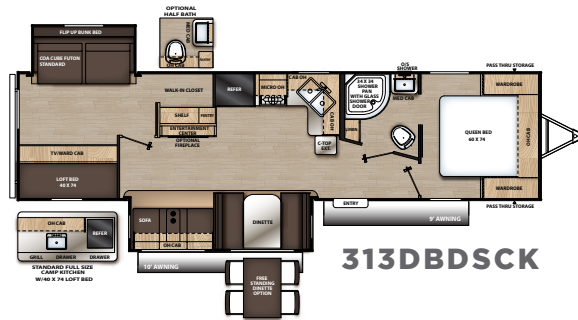
**293RLDS**



**303RKP**







2019 CATALINA LEGACY	243RBS	263RLS	273BHSCK	283RKS	293QBCK	293RLDS	303RKP	303RKDS	313DBDSCK	313DSRBCK	323BHDSCCK	333BHTSCK	333RETS
SHIPPING WEIGHT	5,702	6,052	6,319	6,449	6,512	7,470	7,686	TBA	8,118	7,634	7,690	8,366	8,206
CARRYING CAPACITY	1,838	1,588	1,221	2,691	2,928	1,970	2,054	TBA	2,322	2,106	1,750	2,374	2,234
UVW	5,762	6,112	6,379	6,509	6,572	7,530	7,746	TBA	8,178	7,694	7,750	8,426	8,266
GVWR	7,600	7,700	7,600	9,200	9,500	9,500	9,800	TBA	10,500	9,800	9,500	10,800	10,500
HITCH WEIGHT	687	718	665	735	835	940	808	TBA	958	872	790	922	1,106
EXTERIOR HEIGHT (INCLUDES A/C)	11' 1"	11' 1"	11' 1"	11' 1"	11' 1"	11' 1"	11' 3"	TBA	11' 1"	11' 3"	11' 1"	11' 1"	11' 1"
FRESH WATER CAPACITY (GAL.)	44	44	44	44	44	44	44	TBA	44	44	44	44	44
GREY WATER CAPACITY (GAL.)	40	40	40	70	40	40	70	TBA	70	80	70	70	70
WASTE WATER CAPACITY (GAL.)	30	30	30	30	30	30	30	TBA	30*	30	30	30	30
AWNING LENGTH	15'	15'	18'	15'	18'	21'	21'	TBA	10' / 9'	18'	21'	10' / 10'	14'
WHEEL SIZE	15"	15"	15"	15"	15"	15"	15"	TBA	15"	15"	15"	15"	15"
EXTERIOR LENGTH (INCLUDES BUMPER TO HITCH)	27' 11"	29' 10"	31' 11"	32' 6"	33' 5"	33' 9"	35' 3"	TBA	35' 11"	35' 8"	35' 10"	36' 9"	35' 10"
EXTERIOR WIDTH	96"	96"	96"	96"	96"	96"	96"	TBA	96"	96"	96"	96"	96"
INTERIOR HEIGHT (COACH)	81"	81"	81"	81"	81"	81"	81"	TBA	81"	81"	81"	81"	81"
AXLES	3500 lbs.	3500 lbs.	3500 lbs.	4400 lbs.	4400 lbs.	4400 lbs.	5100 lbs.	TBA	5100 lbs.	5100 lbs.	4400 lbs.	5100 lbs.	4400 lbs.

\*60 gallons w/half bath option

## ***LEGACY EDITION***



Start your camping legacy today with the Coachmen Catalina Legacy Edition. Our Legacy Edition has all the features and amenities of home to take with you on your adventures! The Legacy Edition comes with more standard features than any comparable model! We hope to welcome you to the Coachmen family soon and start your Legacy!

The smallest unit on the market with a full 12'4" long super slide room really makes the 243RBS something special! Wake up and grab a bite and some coffee at the breakfast bar before heading out, then, when you're ready to come in for the day, the 243RBS provides you plenty of space to lounge around. All of this, while still weighing less than 5800 lbs.!

## 243RBS

### SANDCASTLE DECOR



\*shown with optional sink covers, bar stools, fireplace, & tri fold sofa



# 333RETS

Wow! That's the first word that comes to mind when you step in to the Catalina 333RETS. Designed with a huge living and kitchen area to make your camping trips the ultimate experience! With an oversized bedroom, giant wardrobe, standard recliners, extra-large living room, and much more, you can't help but say wow!



The 333RETS bedroom is built with a slide out making it one of the most spacious bedrooms in any travel trailer.



This bedroom also includes a custom built entertainment center and a fireplace. You'll feel right at home when you're ready to call it a night!



Tired of small bathrooms? That is something you don't have to worry about in the 333RETS. A full-sized radius shower that includes tub surround and skylight, dual entrances, large sink, and medicine cabinets provide all the convenience you could ask for.



\*bedroom shown with optional 2nd a/c, bedroom TV not included, living room is shown with optional free standing table & chairs, fireplace, and tri fold sofa





## 273BHCK

This carefully thought out floor plan is just as functional as it is appealing. With plenty of storage including two pantries, countertop space, and direct view entertainment from the sofa, it is no wonder this is such a huge customer favorite!

MOCHA DECOR







**LEGACY EDITION**

**TOTAL FACTORY SPECIAL SAVINGS \$3,505**

**FREE!**

**PREMIUM EXTERIOR PACKAGE**

- Fully Enclosed Underbelly
- Hot/Cold Outside Shower
- XL Grab Handle at Main Entrance
- Power Tongue Jack • Black Tank Flush
- Aluminum Fender Skirts • Exterior TV Hookups
- E-Coat Sport Style Wheel Package

**RETAIL VALUE \$1,115**



**FREE!**

**LEGACY EDITION PACKAGE**

**FREE!**



- Skylight above Tub/Shower • LED Interior Lighting • Front Diamond Plate • Quilted Designer Comforter • Gas/Electric DSI Water Heater
- ABS Shower/Tub Surround
- 5/8" Tongue and Groove Plywood Flooring
- All-In-One Monitor System
- Jiffy Sofa w/ Flip Down Cupholder

**RETAIL VALUE \$730**

**DESIGNER KITCHEN PACKAGE**



**FREE!**

**HOME ENTERTAINMENT PACKAGE**

**FREE!**

**STARLIGHT SYSTEM PACKAGE**



- 32" Sansui Flat Screen Living Room TV • Swing Arm TV Bracket
- Furrion DVD/mp3/FM Stereo w/ Bluetooth and USB Charging Port
- Upgraded In-Wall Speaker System

**RETAIL VALUE \$665**



- Residential Pull Down Faucet • Waterfall Edge Thermofoil Countertops
- Deep Basin Undermount 50/50 Sink • Reversible Refer Inserts
- Furrion Range Oven w/ Blue LED Accent Lighting and Flush Mounted Glass Top • Styled Mosaic Tile Backsplash

**RETAIL VALUE \$515**

- Power Awning w/ Blue LED Light • Outdoor Speakers with Blue LED Lights • Blue LED Underbody Lighting Door-Side

**RETAIL VALUE \$480**

## STANDARDS + OPTIONS

### CONSTRUCTION AND EQUIPMENT FEATURES

	LEGACY	SBX
5/8" TONGUE & GROOVE PLYWOOD FLOOR DECKING	P	P
GAS/ELECTRIC DSI WATER HEATER	P	S
ENCLOSED, FULLY SEALED UNDERBELLY	P	O
3/8" FULLY DECKED WALK-ON ROOF	S	S
SEAMLESS ROOF MEMBRANE WITH 12 YEAR WARRANTY	S	S
2" X 3" FLOOR JOISTS ON APPROXIMATELY 12" CENTERS	S	S
81" CEILING HEIGHT	S	S
EASY-TRAC RACK AND PINION SLIDE-OUT(S)	S	S
R-7 FIBERGLASS INSULATION THROUGHOUT	S	S
CAMBERED STRUCTURAL STEEL I-BEAM FRAME	S	S
FULL LENGTH FRAME OUT RIGGERS	S	S
WATER HEATER BY-PASS WINTERIZATION KIT	S	P
35,000 BTU AUTO-IGNITION FURNACE W/WALL THERMOSTAT	S	S
12V DEMAND WATER PUMP	S	S
PLATINUM .024" ALUMINUM EXTERIOR SKIN W/.030 SKIRT METAL	S	S
DEXTER EZ LUBE AXLES W/LEAF SPRING SUSPENSION	S	S
SELF ADJUSTING BRAKES	S	S
ROTO-CAST HOLDING TANKS	S	S
PAINTED BUMPER W/ DRAIN HOSE CARRIER AND END CAPS	S	S
30 AMP ELECTRICAL SERVICE W/ 100V 45-AMP POWER CONVERTER	S	S

### EXTERIOR FEATURES

	LEGACY	SBX
POWER AWNING W/LED LIGHTING	P	P
SMOOTH METAL RADIUS FRONT	S	S
BLUE LED UNDERBODY LIGHTING ON THE DOOR SIDE	P	
POWER TONGUE JACK	P	
MANUAL TONGUE JACK		S
TWO 20LB. LP BOTTLES W/ ABS COVER	S	P
FLUSH MOUNT BAGGAGE DOORS W/RADIUS CORNERS	S	S
DIAMOND PLATE ROCK GUARD	P	P
FOUR STABILIZER JACKS	S	P
G20 TINTED WINDOWS	S	S

### EXTERIOR FEATURES (CONTINUED)

	LEGACY	SBX
ALUMINUM FENDER SKIRTS	P	S
E-COAT SPORT STYLE WHEELS	P	P
RADIUS CORNERED FIBERGLASS ENTRY DOOR	S	S
ENTRY DOOR SAFETY WINDOW	S	S
EXTERIOR 110V G.F.C.I PROTECTED RECEPTACLE	P	S
EXTERIOR RG-6 COAX CABLING AND SATELLITE PREP	P	
REAR VIEW CAMERA PREP	P	P
RAIN GUTTERS WITH DRIP SPOUTS	S	S
RADIUS ENTRY STEPS	S	S
XL SWING ARM GRAB HANDLE	P	P
OUTSIDE UTILITY SHOWER W/ HANDS FREE HOLDER	P	
BLACK TANK FLUSH	P	P

### INTERIOR FEATURES

	LEGACY	SBX
32" FLATSCREEN TV MOUNTED ON SWING ARM TV BRACKET	P	
BLUETOOTH STEREO AND DVD PLAYER W/CD,MP3, USB AND AM/FM RADIO	P	P
IN-WALL MOUNTED INTERIOR SPEAKERS	P	P
ALL-IN-ONE MONITOR PANEL	P	P
RESIDENTIAL PULL DOWN SPRAYER FAUCET	P	
HIGH RISE FAUCET		S
DROP EDGE THERMOFOIL SEAMLESS COUNTER TOPS	P	S
SCREWED CABINET CONSTRUCTION W/POCKET BORED LUMBER CORE STILES	S	S
CONGOLEUM WOODPLANK LINOLEUM FLOORING	S	S
SALVAGED LIGHT OAK CABINETS	S	S
DEEP UNDERMOUNT DUAL BASIN 50/50 SINK	P	P
FULL LENGTH BALL-BEARING KITCHEN DRAWER GUIDES	S	S
3 BURNER RANGE W/FLUSH MOUNT GLASS TOP	P	
OVEN WITH BLUE LED ACCENT LIGHTING	P	
3 BURNER RANGE AND OVEN		P
RANGE HOOD	S	P
SILVERWARE KITCHEN DRAWER	S	S
WASHER/DRYER PREP W/DIRECT DUMP - 303RKDS	S	

## STANDARDS + OPTIONS

### INTERIOR FEATURES (CONTINUED)

	LEGACY	SBX
JIFFY SOFA W/FLIP DOWN CUP HOLDER/ARM REST	P	P
MOSAIC TILE BACKSPLASH	P	
MICROWAVE	S	P
ABS TUB/SHOWER SURROUND	P	S
SKYLIGHT ABOVE TUB/SHOWER	P	P
7 CU. FT. GAS/ELECTRIC RV REFRIGERATOR	S	S
REVERSIBLE REFER FRONT INSERTS	P	S
13,500 BTU DUCTED A/C	S	P
15,000 BTU DUCTED A/C	O	O
RESIDENTIAL IN-FLOOR DUCTED HEAT (N/A 261BH)	S	S
FLEX DUCTED CABINET/WALL HEAT (261BH ONLY)		S
LED INTERIOR LIGHTING	P	P
STORAGE UNDERNEATH THE JIFFY SOFA	S	S
SOFA DECORATIVE THROW PILLOWS	S	S
70" SLIDE OUT ROOM HEIGHT	S	S
HARD VALANCE WINDOW TREATMENT W/DECORATIVE LAMBREQUINS	S	S
PLEATED NIGHT WINDOW SHADES	S	P
PEDESTAL THERMOFOIL DINETTE TABLE	S	S
DINETTE STORAGE UNDER BENCHES	S	S
EASY ACCESS BOOTH DINETTE STORAGE DOORS	S	
MEDICINE CABINET WITH MIRROR	S	S
SOLID MASTER BEDROOM DOOR(S)	S	S
SOLID BUNK ROOM DOOR	S	
FULL LENGTH NIGHT STANDS WITH RECEPTS (N/A 333RETS)	S	S
NIGHT STANDS BUILT INTO BED SLIDE OUT WALLS (333RETS ONLY)	S	
MIRRORED WARDROBES IN MASTER BEDROOM	S	S
MASTER BEDROOM OVERHEAD CABINETS	S	
MASTER BEDROOM OVERHEAD SHELF		S
UNDERBED STORAGE W/SEPARATION FROM OUTSIDE PASS THROUGH STORAGE	S	S
QUILTED DESIGNER BEDSPREAD	P	S
TEDDY BEAR BUNK MATS	S	S
BUNK ROOM CURTAIN		S
MARINE TOILET WITH FOOT FLUSH	S	S

### SAFETY FEATURES

	LEGACY	SBX
SMOKE ALARM	S	S
LP/CO2 GAS DETECTOR	S	S
FIRE EXTINGUISHER	S	S
FIRE ESCAPE WINDOWS	S	S
DEAD-BOLT LOCK ON ENTRY DOOR	S	S

### OPTIONS

	LEGACY	SBX
15,000 BTU DUCTED A/C IPO 13.5 A/C	O	O
TWO 30LB. LP BOTTLES W/COVER	O	O
KITCHEN SINK COVERS	O	O
ENCLOSED UNDERBELLY	P	O
50 AMP SERVICE W/2ND 13.5 A/C (291QBS,293QBCK, 293RLDS, 303RKP, 303RKDS, 313DBDSCK,313DSRBCK, 321BHDS, 323BHDSCCK, 333BHTSCK, 333RETS)	O	O
50 AMP SERVICE W/2ND A/C PREP (291QBS ,293QBCK, 293RLDS, 303RKP, 303RKDS, 313DBDSCK,313DSRBCK, 321BHDS, 323BHDSCCK, 333BHTSCK, 333RETS)	O	O
FREE STANDING TABLE W/4 CHAIRS (N/A U-DINETTE FLOOR PLANS)	O	
TRI-FOLD HIDE A BED SOFA	O	
SOLIDSTEP ENTRANCE STEPS IPO FLIP-DOWN STEPS (MAIN ENTRANCE ONLY)	O	O
12V 10CU. FT. REFRIGERATOR (293RLDS, 333RETS, & 333BHTSCK ONLY)	O	
BAR STOOLS (SUGGESTED 243RBS)	O	
HALF BATH IPO WALK-IN CLOSET (313DBDSCK ONLY)	O	
30" FURRION FIREPLACE (N/A 263RLS & 273BHSCCK)	O	
FULL SIZE EXTERIOR CAMP KITCHEN (291BHS)		O
PULL OUT CAMP KITCHEN (261BHS AND 321BHS ONLY)		O
FULL WALL W/POCKET DOOR & WALL MIRROR (261BH ONLY)		O
CSA STANDARDS	O	O

**KEY:** S - STANDARD O - OPTION P - PACKAGE FEATURE



***SBX***



The Catalina SBX is our show buster Xtreme line up. With tons of features and standards packed in at a very affordable price, the SBX is a hit across North America. Featuring 6 family friendly floorplans, the SBX has everything that you'll need for your next adventure! Thank you and welcome to the Coachmen Catalina family!

Perfect for the modern family, the 261BHS combines features and affordability unlike any other! Spacious double over double bunks provide large sleeping spaces for the kids and friends, while the master has a full wall and door for privacy, with a walk around bed to create a more residential feeling. Coupled with copious amounts of cabinet storage and seating, the 261BHS is just right for family campers.

## 261BHS

### SANDCASTLE DECOR



## 321BHDS

This double slide with bunk room has it all! A large living space and U-Shaped dinette make family meals a breeze! Double door entry allows direct access to the bathroom, minimizing mud and dirt being tracked in through the living room. The 321BHDS is the perfect camper to start your family's camping experience!



The 321BHDS bunkroom with its deep slide out and futon provides a large separated space, and a wide array of comfortable sleeping options!

## BISCOTTI DECOR







## 291BHS

This floorplan provides so much versatility and convenience. With our standard quad bunk configuration that includes double over double bunks, a flip down bunk, and a bunk room dinette, the 291BHS has the ability to accommodate large families and groups of friends. The optional full size camp kitchen can take the party outside to the next level, while spacious interior and exterior storage provide you enough space to pack all of your camping essentials!

### MOCHA DECOR







**SBX**

**TOTAL FACTORY SPECIAL SAVINGS \$2,985**

**FREE!**

**EXTERIOR VALUE PACKAGE**

- Power Awning w/ LED Light
- Black Tank Flush
- E-Coat Sport Style Wheel Package
- Front Diamond Plate
- Aluminum Fender Skirts
- (2) Outside LED Light Marine Grade Speakers
- XL Grab Handle at Main Entrance
- Gas/Electric DSI Water Heater
- Back-Up Camera Prep

**RETAIL VALUE \$1,105**



**FREE!**

**CUSTOMER VALUE PACKAGE**



- 13,500 BTU Ducted A/C
- Range with Oven IPO 3 Burner Cooktop
- Microwave
- LED Interior Lighting
- Deep Basin Undermount 50/50 Sink
- 5/8" Tongue and Groove Plywood Flooring
- (4) Stab Jacks
- 20LB LP Bottles and Cover
- Skylight above Tub/ Shower
- Water Heater By-Pass Winterization Kit

**RETAIL VALUE \$1,265**



- Furrion DVD/mp3/FM Stereo with Bluetooth and USB Charging Port
- Upgraded In-Wall Speaker System
- Jack-Knife Sofa w/ Flip Down Cup Holders/Arm Rest
- All-In-One Monitor Panel
- Pleated Night Shades in Living Room

**RETAIL VALUE \$615**

**FREE!**

**COMFORT AND CONVENIENCE PACKAGE**







# SBX

Built with all the amenities you look for in a camper, the SBX line-up offers a diverse range of affordable floorplans that will accommodate any type of camping lifestyle. Join in on the fun and go camping!



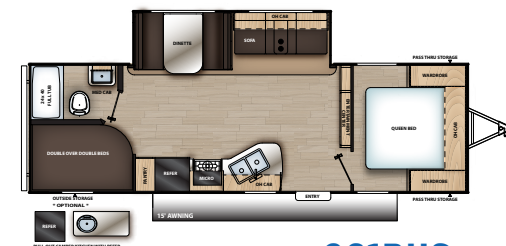
**221TBS**



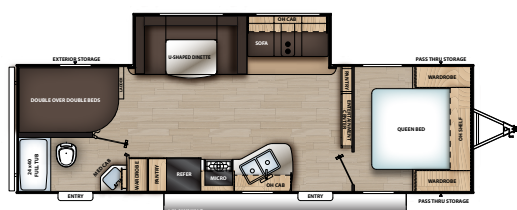
**241RLS**



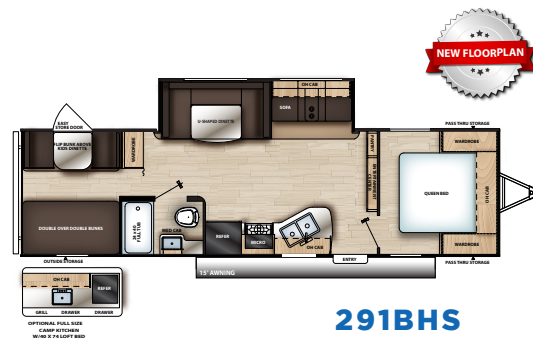
**261BH**



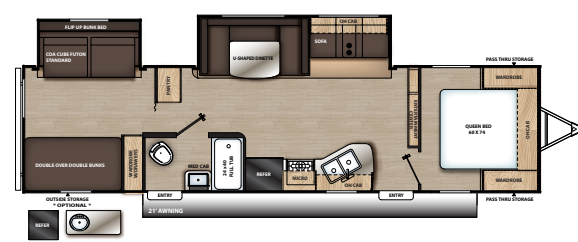
**261BHS**



**281DDS**



**291BHS**



**321BHDS**



Our full size exterior kitchen is available as an option on the SBX 291BHS, this kitchen comes standard on our LEGACY EDITION 313DBDSCK, 323BHDSCCK, and 333BHTSCK.



#### 2019 CATALINA SBX

	221TBS	241RLS	261BH	261BHS	281DDS	291BHS	321BHDS
SHIPPING WEIGHT	5,213	5,704	4,688	6,138	6,109	6,738	7,690
CARRYING CAPACITY	2,227	1,836	2,252	1,502	1,431	2,202	1,750
UVW	5,273	5,764	4,748	6,198	6,169	6,798	7,750
GVWR	7,500	7,600	7,000	7,700	7,600	9,000	9,500
HITCH WEIGHT	710	612	541	738	688	687	790
EXTERIOR HEIGHT (INCLUDES A/C)	10' 7"	11' 1"	10' 7"	11' 1"	11' 1"	11' 1"	11' 1"
FRESH WATER CAPACITY (GAL.)	44	44	44	44	44	44	44
GREY WATER CAPACITY (GAL.)	40	40	40	40	40	*40	40
WASTE WATER CAPACITY (GAL.)	30	30	30	30	30	30	30
AWNING LENGTH	15'	18'	15'	15'	15'	15'	21'
WHEEL SIZE	14"	15"	14"	15"	15"	15"	15"
EXTERIOR LENGTH (INCLUDES BUMPER TO HITCH)	26' 9"	29' 11"	29' 3"	30' 3"	31' 7"	33' 5"	35' 10"
EXTERIOR WIDTH	96"	96"	96"	96"	96"	96"	96"
INTERIOR HEIGHT (COACH)	81"	81"	81"	81"	81"	81"	81"
AXLES	3500 lbs.	3500 lbs.	3500 lbs.	3500 lbs.	3500 lbs.	4400 lbs.	4400 lbs.

\*70 GAL. w/exterior kitchen option (291 only)

# CATALINA

# CATALINA

## LEGACY EDITION *SBX* *TRAILBLAZER* DESTINATION



**24/7 EMERGENCY  
ROADSIDE ASSISTANCE  
WITH VEHICLE PURCHASE\***

TOWING	WINCH-OUT
JUMP-STARTS	MOBILE MECHANIC
TIRE CHANGES	TECHNICAL
FLUID DELIVERY	SUPPORT
LOCKOUT	DEALER LOCATOR
SERVICE	SERVICES



\*VALID FOR 1 YEAR FROM DATE OF PURCHASE

GVWR (Gross Vehicle Weight Rating) - is the maximum permissible weight of the unit when fully loaded. It includes all weights, inclusive of all fluids, cargo, optional equipment and accessories. For safety and product performance do NOT exceed the GVWR.

GAWR (Gross Axle Weight Rating) - is the maximum permissible weight, including cargo, fluids, optional equipment and accessories that can be safely supported by a combination of all axles.

UVW (Unloaded Vehicle Weight)\* - is the typical weight of the unit as manufactured at the factory. It includes all weight at the unit's axle(s) and tongue or pin and LP Gas. The UVW does not include cargo, fresh potable water, additional optional equipment or dealer installed accessories.

\*Estimated Average based on standard build optional equipment.

CCC (Cargo Carrying Capacity)\*\* - is the amount of weight available for fresh potable water, cargo, additional optional equipment and accessories. CCC is equal to GVWR minus UVW. Available CCC should accommodate fresh potable water (8.3 lbs per gallon). Before filling the fresh water tank, empty the black and gray tanks to provide for more cargo capacity.

\*\* Estimated average based on standard build optional equipment

Each Forest River RV is weighed at the manufacturing facility prior to shipping. A label identifying the unloaded vehicle weight of the actual unit and the cargo carrying capacity is applied to every Forest River RV prior to leaving our facilities. The load capacity of your unit is designated by weight, not by volume, so you cannot necessarily use all available space when loading your unit.

All information contained in this brochure is believed to be accurate at the time of publication. However, during the model year, it may be necessary to make revisions and Forest River, Inc., reserves the right to make all such changes without notice, including prices, colors, materials, equipment and specifications as well as the addition of new models and the discontinuance of models shown in this brochure. Therefore, please consult with your Forest River, Inc., dealer and confirm the existence of any materials, design or specifications that are material to your purchase decision.

For more details including videos, 360 views, photos and to see how Coachmen is leading the great outdoors, visit [www.coachmenrv.com](http://www.coachmenrv.com)

Coachmen Industries 423 N. Main St., Middlebury, IN 46540  
Phone: 574-825-5821



[www.ForestRiverBuyLocal.com](http://www.ForestRiverBuyLocal.com)



**COACHMEN OWNERS ASSOCIATION**

**FREE MEMBERSHIP**  
[www.coachmenowners.com](http://www.coachmenowners.com)



**Learn More**  
Scan this barcode using a QR Reader on your smart phone to learn more about Forest River.



A Berkshire Hathaway company.

We are proud of our Coachmen Families.  
Share your memories at:



#coachmencatalina



Coachmen Recreational  
Vehicles

**YOUR CATALINA DEALER**